



**Tewantin, QLD**  
24 Fairway Drive

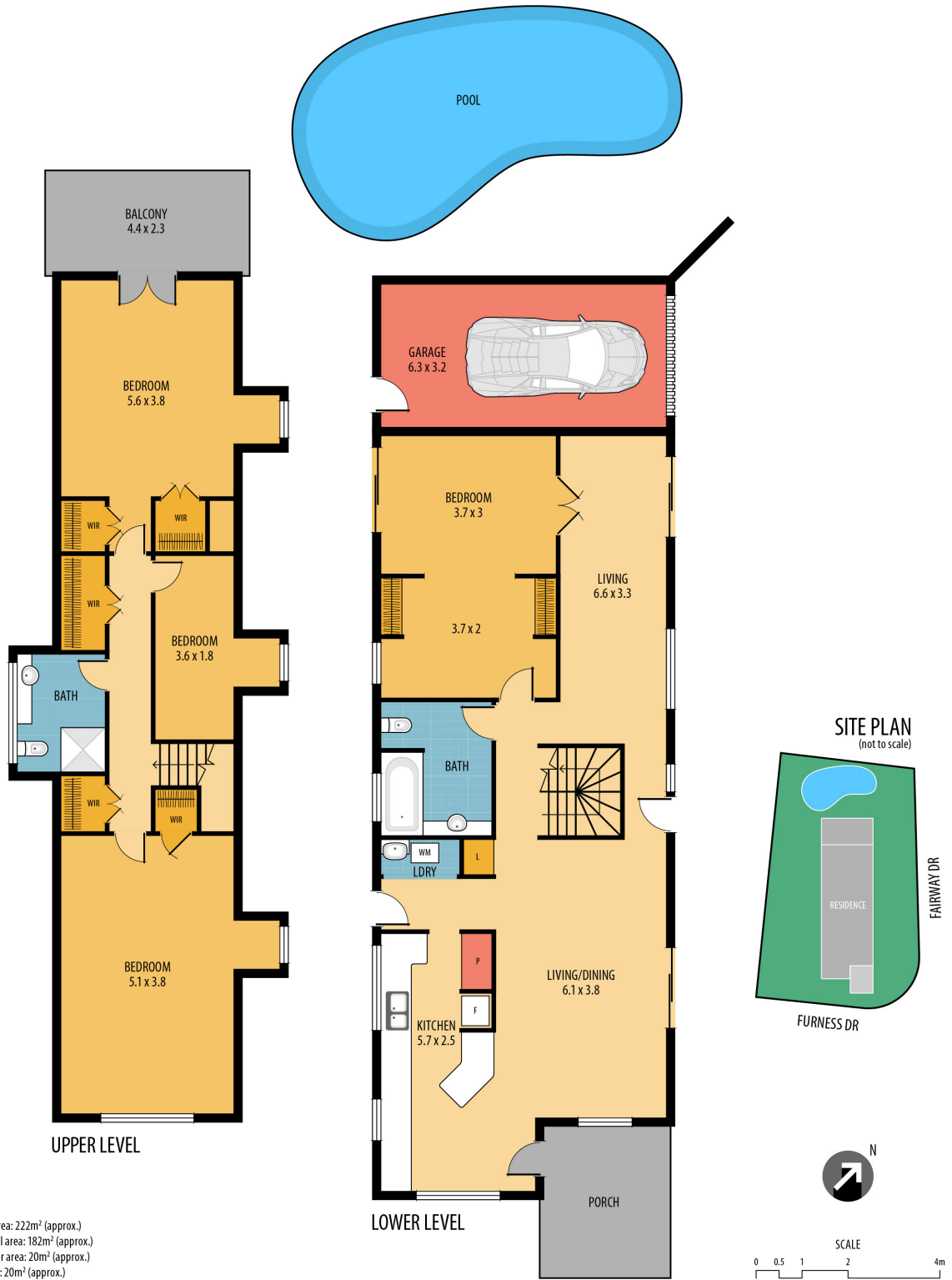
|                 |                  |                 |
|-----------------|------------------|-----------------|
| <b>4</b><br>BED | <b>2</b><br>BATH | <b>1</b><br>CAR |
|-----------------|------------------|-----------------|



Occupying a coveted and elevated corner block with captivating high-set views, this lovely home blends rich character with modern touches. The property presents outstanding potential to capitalize on the convenient location as well as genuine work from home options.

- \* Beautiful high-set home, rich in character and untouched views across to the Noosa hinterland
- \* Light filled second level boasting two enormous bedrooms, A/C, central bathroom and a third bedroom/study, north facing private balcony overlooks the pool with views to Mt Cooroy
- \* Modern kitchen with chefs gas cooker, dishwasher, ample cupboard & bench space
- \* Big and comfortable main living offering various access points to the outdoors

**SOLD**  
**Contact:** Steve Gillespie  
0417 652 329  
**Type:** House  
**Sold Date:** 18/07/2018  
**Land:** 753m2  
<http://hangloosa.com.au>



Total area: 222m<sup>2</sup> (approx.)  
 Internal area: 182m<sup>2</sup> (approx.)  
 Outdoor area: 20m<sup>2</sup> (approx.)  
 Garage: 20m<sup>2</sup> (approx.)

## 24 FAIRWAY DR, TEWANTIN

**DISCLAIMER:** ALL DIMENSIONS ARE AN APPROXIMATION ONLY AND NO GUARANTEE IS GIVEN WITH RESPECT TO ACCURACY.

**HANGloosa**  
property noosa

Plans shown are only indicative of layout. Dimensions are approximate.

**Tewantin, QLD**  
24 Fairway Drive